

Green Villas

A Higher Quality of Living



M. S. C. Margalla View housing Scheme,
D-17/2, Islamabad.
Ph: 051 222 9797, 222 9798, 222 9907,
Fax: 051 2809509
E-mail: reliance_builders@yahoo.com

0333 5622 693 | 0333 5736 170
facebook.com/reliancebuildersislamabad

PROJECT DESIGN BY
Concept Design
0321-5871502

LINEart DESIGNERS
BROCHURE
DESIGNED & PRINTED BY
0302-8550071 - 051-2806166

Green Villas

A Higher Quality of Living



A Project of

**Reliance
BUILDERS**
Value built on value



Some of our Projects in D-17, Islamabad



Prime Arcade



Park View Plaza



Classic Center



City Center 1

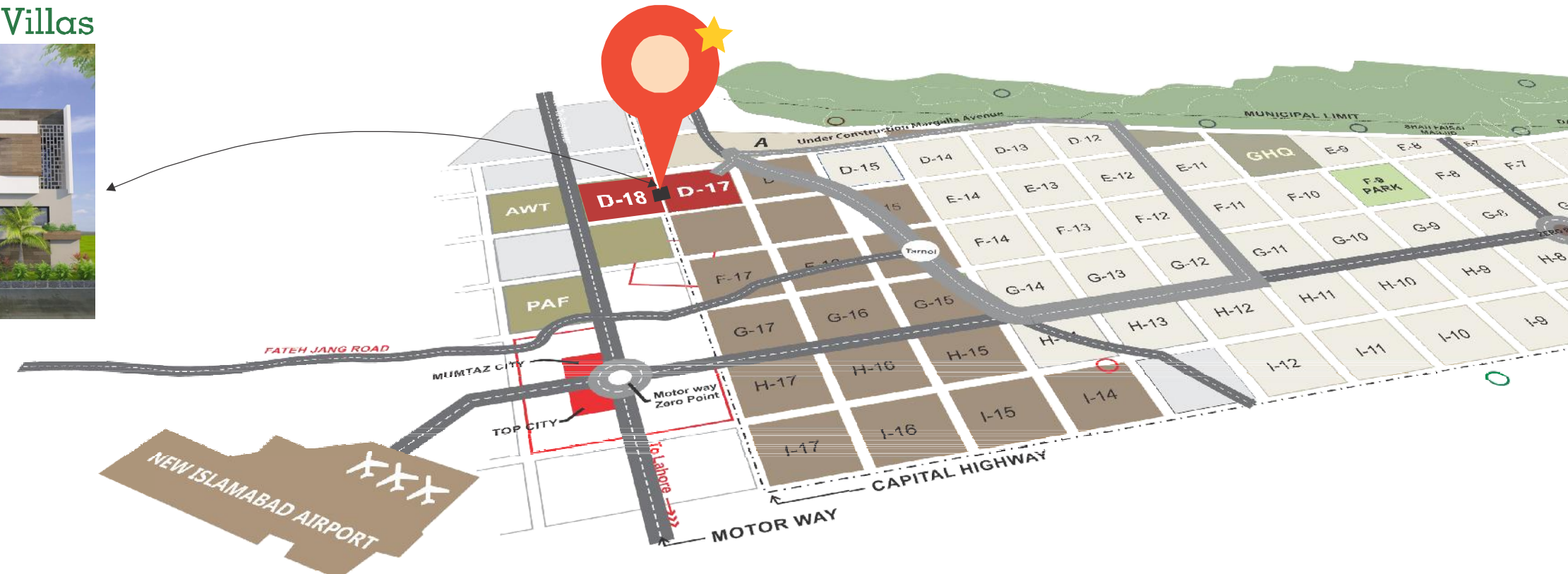


City Center 2

| facebook.com/reliancebuildersislamabad |

Green Villas are situated between D-17 and D-18, Green Villas are about 10 minutes drive from G-T Road, Motorway Interchange. This zone is considered to be the focus of investment in real estate being closer to the New Islamabad International Airport and connected with Islamabad & Rawalpindi through G.T Road, Kashmir & Margalla Highways. Specially after the construction of Margala Avenue by CDA, traveling to City Center would be a breeze. In near future D-17 & D-18 will also be connected to Islamabad/Peshawar Motorway (M-1) via interchange located at a distance of just 2 km.

Green Villas



Reliance builder is a well-known name in real estate industry in Islamabad. Our focus was to provide unparalleled quality of service, with honesty and integrity. Our focus enabled us to achieve a rapid growth rate and by 2007 we became involved in the construction industry - initially building houses for our local and overseas clients.

Who placed their faith in us? As our team grew and our standard of build quality enhanced our reputation, we began to take on larger projects in conjunction with our associates, partners and investors. Today we are a reputable real estate and construction company specializing in residential and commercial projects of varying sizes with many satisfied clients around the world.

| facebook.com/reliancebuildersislamabad |



Green Villas

A Higher Quality of Living

Project Introduction

Green Villas are ideally situated between D-17 & D-18, which makes it easily accessible from all aspects. Offering unparalleled panoramic views of the enchanting Margalla Hills from the comfort of your room, coupled with top of the line furnishings and amenities, you will find all the essentials for an ultimate indulging experience. A combination of outstanding facilities and superlative attention to detail makes the villas a premier lifestyle destination. Discover the epitome of comfort in the tranquil sanctuary that is undeniably Green Villas.

Quality materials have been used on doors, windows and floors to raise your standard of living. Save it from any calamity as much as we can, it has earth quake proof structure. Not a single aspect of this project has been left unnoticed because we know how to make it a place where you see your comfort.

Green Villas offers you a dream home of your choice comprising 3 and 5 room villas, elegantly designed to suit your taste and budget. High standard of finish and use of quality material in all fixtures to ensure you get the cry best you deserve.



Green Villas

Features

Green Villas is a turn-key housing project that defines affordable luxury. It offers contemporary living with elegant designs in a combination of 3 & 5 bedroom villas with superb facilities. When you need simplicity with a touch of style, for those fast paced, compact families, Green Villas are ideal. Our villas are functional yet spacious with practical spaces for living rooms, comfortable bedrooms, American kitchens, bathrooms and spacious car parking.

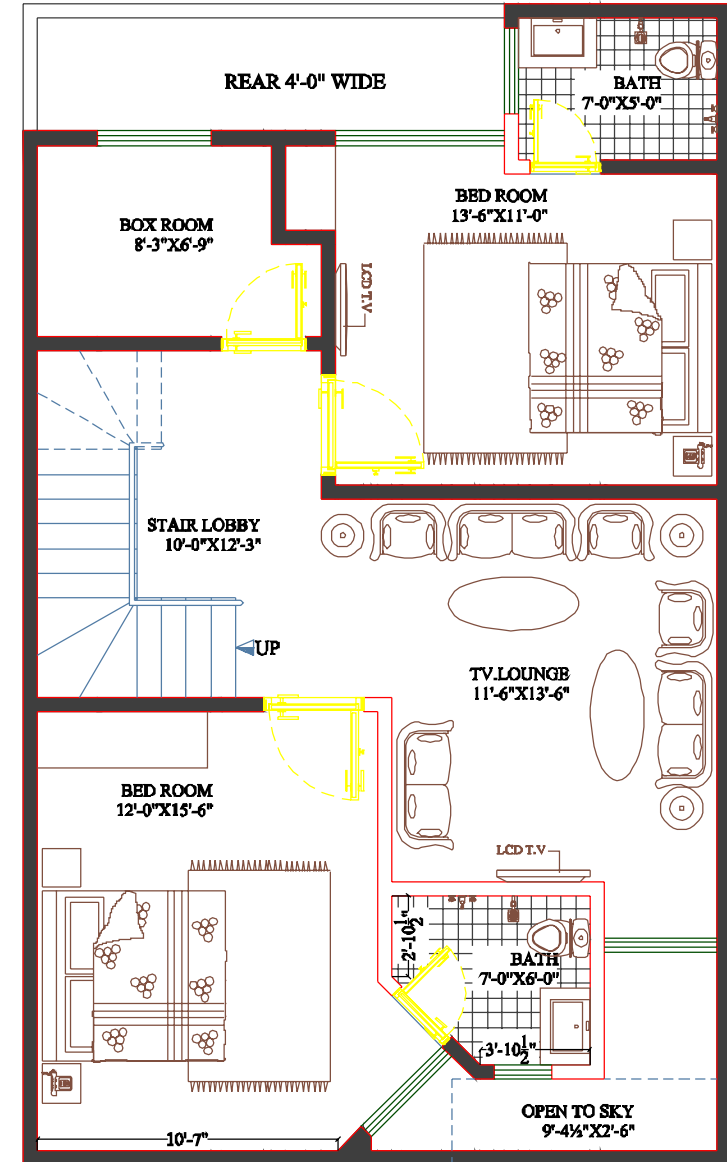
- Choice of 3 & 5 Bedroom Villas
- Spacious Car Porch
- Solid Doors
- Stylish Wardrobes
- Marble/Tile Flooring
- Imported Bathroom Tiles
- Imported Sanitary Fittings
- Aluminum Windows
- American Style Kitchen
- Decorative false ceiling with concealed lights
- High quality electric wires with imported fittings
- Built-in ducting for Air Conditioners
- Cable TV and Telephone
- UPS Wiring



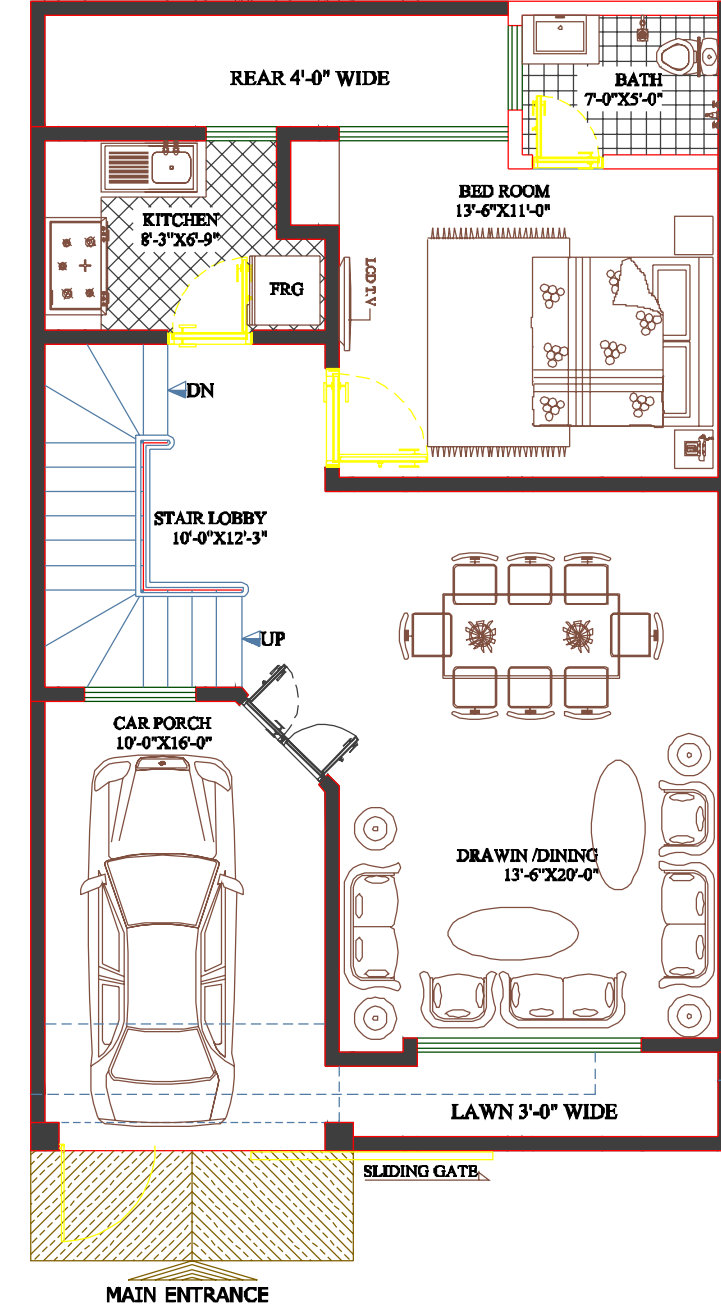
Green Villas

Green Villa With Basement

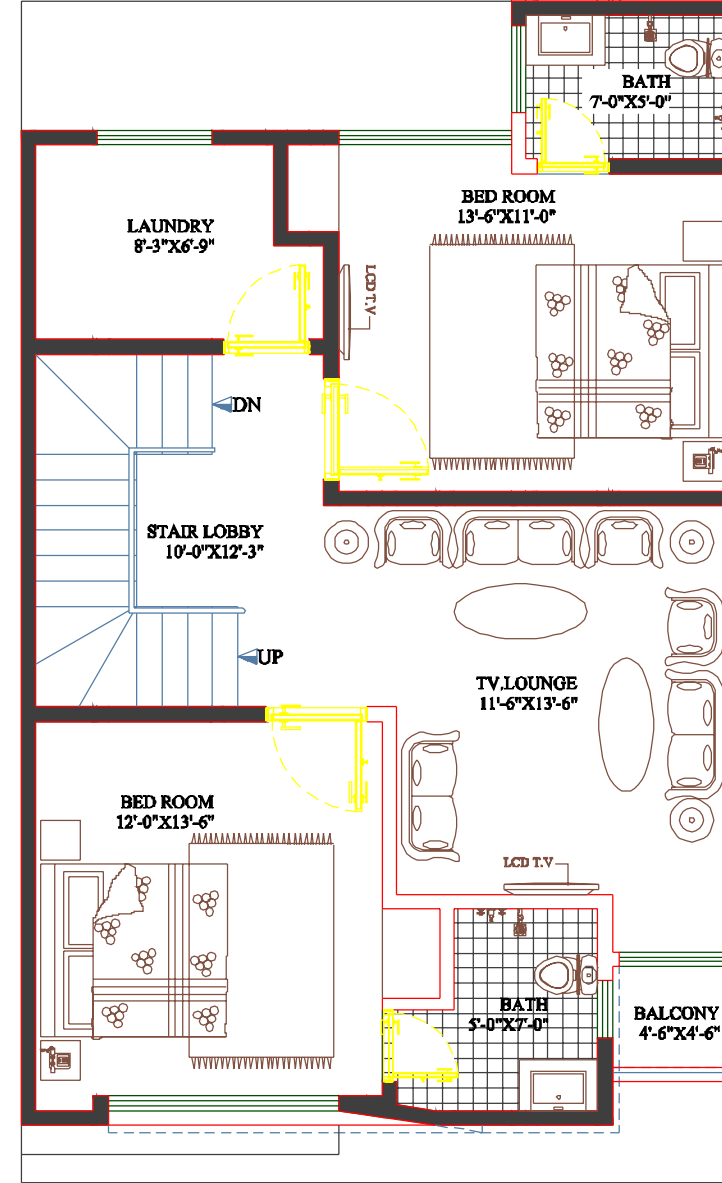
BASEMENT FLOOR LAYOUT PLAN
COVERED AREA = 917.44 Sq.ft.



GROUND FLOOR LAYOUT PLAN
COVERED AREA = 893.00 Sq.ft.



FIRST FLOOR LAYOUT PLAN
COVERED AREA = 893.00 Sq.ft.



Green Villas

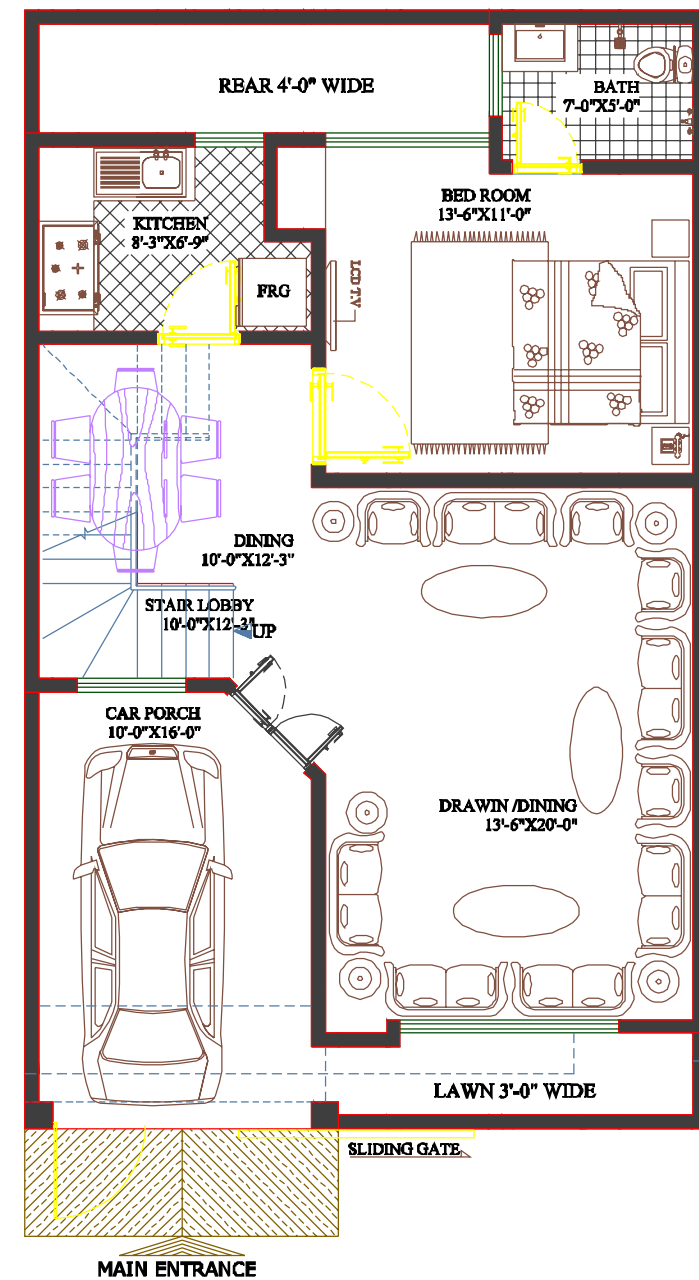
A Higher Quality of Living



Green Villa Without Basement

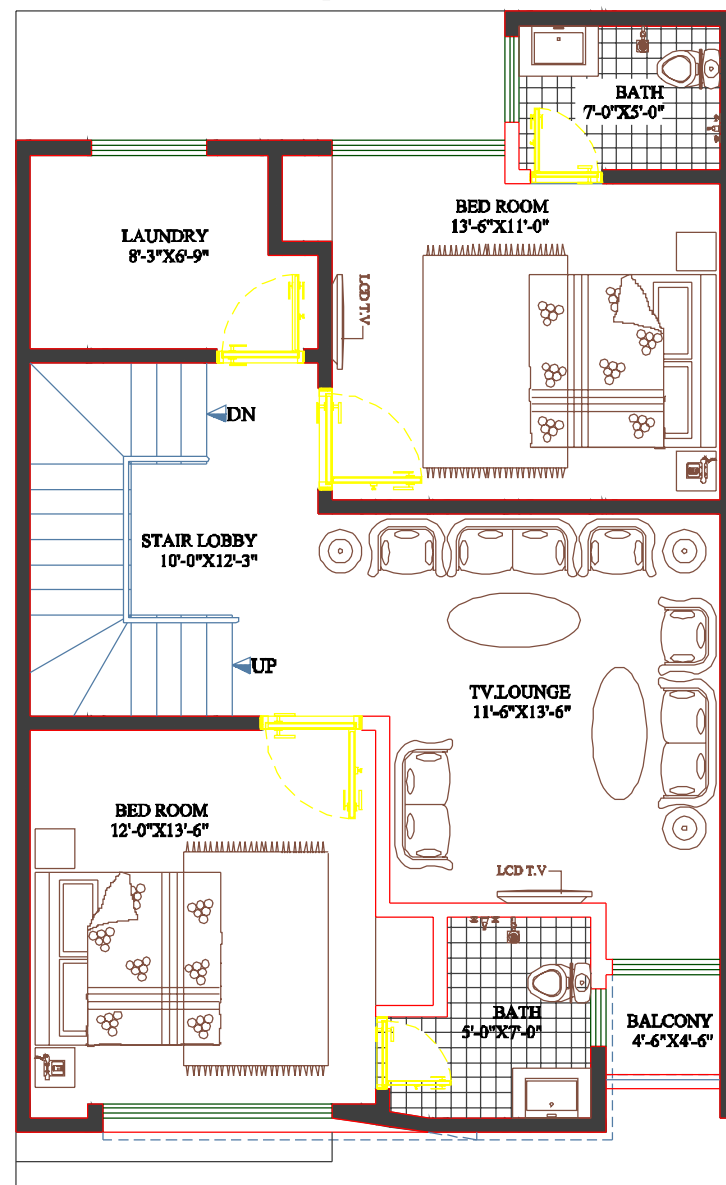
GROUND FLOOR LAYOUT PLAN

COVERED AREA = 893.00 Sq.ft.



FIRST FLOOR LAYOUT PLAN

COVERED AREA = 893.00 Sq.ft.



MASTER PLAN

